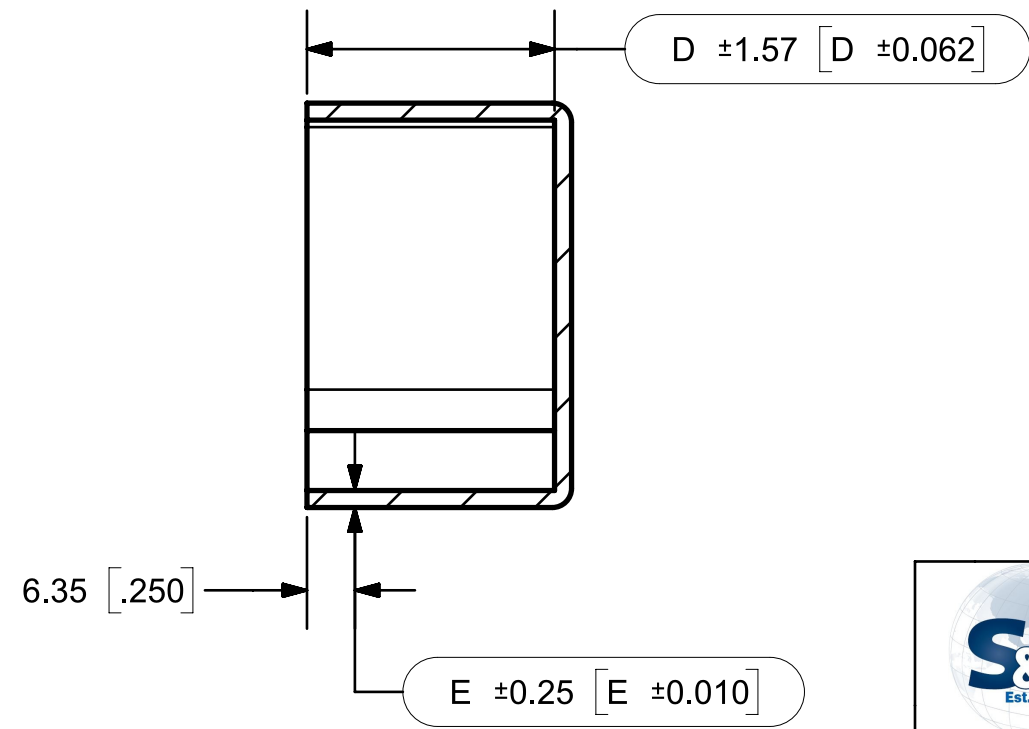
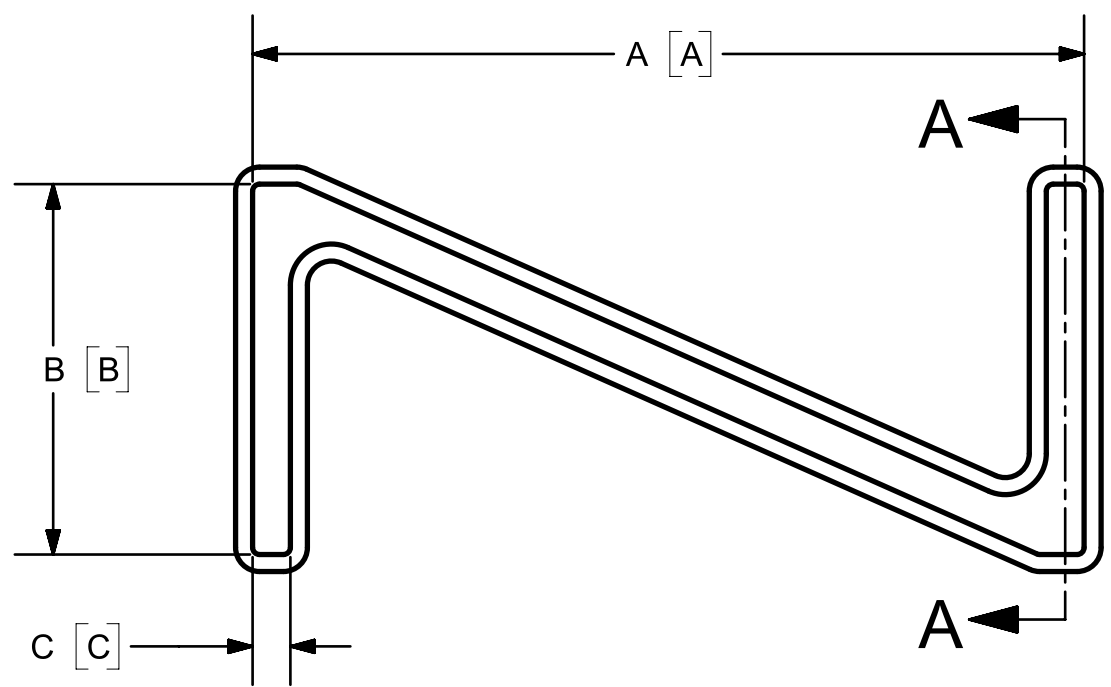




DIMENSION	ITEM REFERENCE				
	02362 (LV02362)	CM148 (LVCM148)	CM149 (LVCM149)	CM1186 (LVCM1186)	CM913 (LVCM913)
A - INTERNAL LENGTH	110.00 [4.331]	170.00 [6.693]	110.00 [4.331]	125.00 [4.921]	120.00 [4.724]
B - INTERNAL WIDTH	49.00 [1.929]	49.00 [1.929]	49.00 [1.929]	85.00 [3.347]	40.00 [1.575]
C - INTERNAL THICKNESS	5.00 [0.197]	5.00 [0.197]	5.00 [0.197]	5.00 [0.197]	5.00 [0.197]
D - CAP INTERNAL LENGTH	150.00 [5.906]	150.00 [5.906]	150.00 [5.906]	150.00 [5.906]	100.00 [3.937]
E - WALL THICKNESS	2.25 [0.089]	2.25 [0.089]	2.25 [0.089]	3.00 [0.118]	2.25 [0.089]
MATERIAL	PVC	PVC	PVC	PVC	PVC
SHORE HARDNESS	85A +/- 5	85A +/- 5	70A +/- 5	70A +/- 5	70A +/- 5
COLOR	MUSTARD YELLOW	YELLOW	MUSTARD YELLOW	YELLOW	YELLOW

REV	DESCRIPTION	DATE	BY	APP



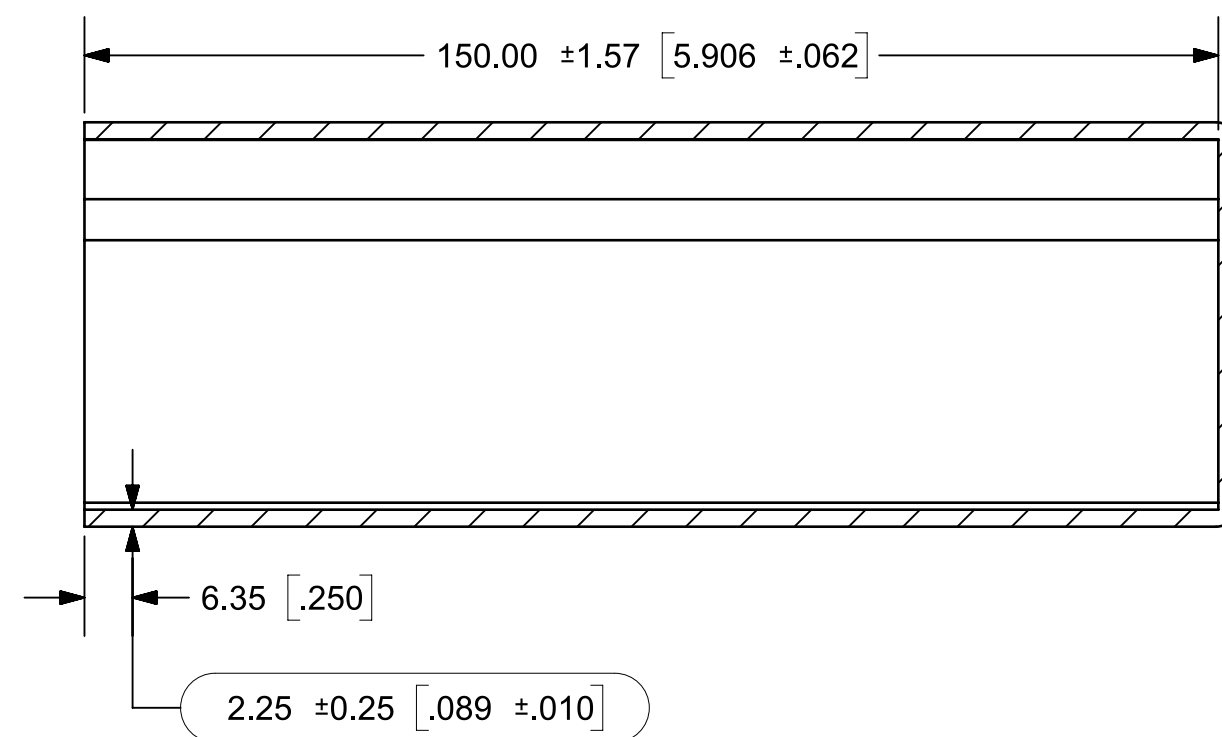
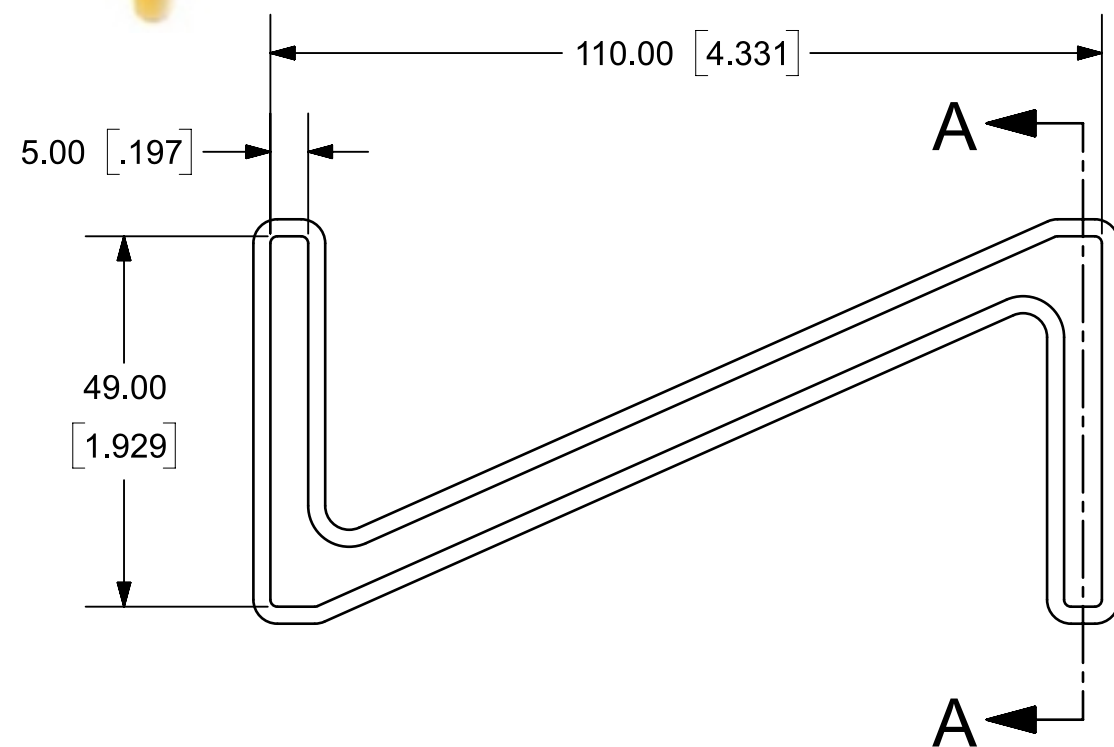
SECTION A-A

- NOTES:
1. DIMENSIONS IN [] ARE INCHES.
 2. DIMENSIONS INSIDE OVALS ARE INSPECTION DIMENSIONS. ALL OTHER DIMENSIONS ARE REFERENCE.
 3. SURFACE TYPE: SMOOTH WITH MEDIUM GLOSS
 4. REFERENCE DRAWING ONLY.

 Sinclair & Rush Global Manufacturer of Plastic, Rubber & Foam Components	SINCLAIR AND RUSH LTD. 19 LAKER ROAD, ROCHESTER KENT, ME1 3QX UK WWW.SINCLAIR-RUSH.CO.UK	
	THIS DRAWING CONTAINS CONFIDENTIAL INFORMATION OF SINCLAIR AND RUSH LTD. AND IS NOT TO BE COPIED, USED OR, DISCLOSED TO OTHERS WITHOUT THE EXPRESS WRITTEN CONSENT OF SINCLAIR AND RUSH LTD.	
THE VINYL DIP MOLDING PROCESS RESULTS IN VARYING WALL THICKNESS. WALL THICKNESS IS MEASURED AT SPECIFIED POINT ONLY.	ALL DIMENSIONS AND SYMBOLS CONFORM TO ANSI Y14.5	DRW WMB DATE 25-OCT-22 CK GSG DATE 28-OCT-22 APP GSG DATE 28-OCT-22
	 THIRD ANGLE PROJECTION	SCALE 1:1
DESCRIPTION Z-POST CAP, ITEM REFERENCE TABLE		
SIZE B	SHEET 1 OF 1	PART / DRAWING NUMBER CP4530 REV 0




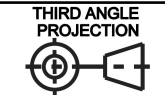
REV	DESCRIPTION	DATE	BY	APP



SECTION A-A

NOTES:

1. DIMENSIONS IN [] ARE METRIC.
2. DIMENSIONS INSIDE OVALS ARE INSPECTION DIMENSIONS. ALL OTHER DIMENSIONS ARE REFERENCE.
3. MATERIAL: FLEXIBLE PVC
S&R FORMULA 00943
COLOR: MUSTARD YELLOW
70±5 SHORE A DUROMETER
4. SURFACE TYPE: SMOOTH WITH MEDIUM GLOSS

	<h2>Sinclair & Rush</h2> <p>Global Manufacturer of Plastic, Rubber & Foam Components</p>		SINCLAIR AND RUSH LTD. 19 LAKER ROAD, ROCHESTER KENT, ME1 3QX UK WWW.SINCLAIR-RUSH.CO.UK	
	THIS DRAWING CONTAINS CONFIDENTIAL INFORMATION OF SINCLAIR AND RUSH LTD. AND IS NOT TO BE COPIED, USED OR, DISCLOSED TO OTHERS WITHOUT THE EXPRESS WRITTEN CONSENT OF SINCLAIR AND RUSH LTD.			
THE VINYL DIP MOLDING PROCESS RESULTS IN VARYING WALL THICKNESS. WALL THICKNESS IS MEASURED AT SPECIFIED POINT ONLY.	ALL DIMENSIONS AND SYMBOLS CONFORM TO ANSI Y14.5	DRW GSG CK PB	DATE 01-DEC-22 DATE 01-DEC-22	
		APP PB	DATE 01-DEC-22	
	SCALE 1:1			
DESCRIPTION COMPONENT FORCE-S POST CAP-150.00MM-2.25MM-PVC-00943-MUSTARD YELLOW				
SIZE B	SHEET 1 OF 1	PART / DRAWING NUMBER 52810	REV 0	