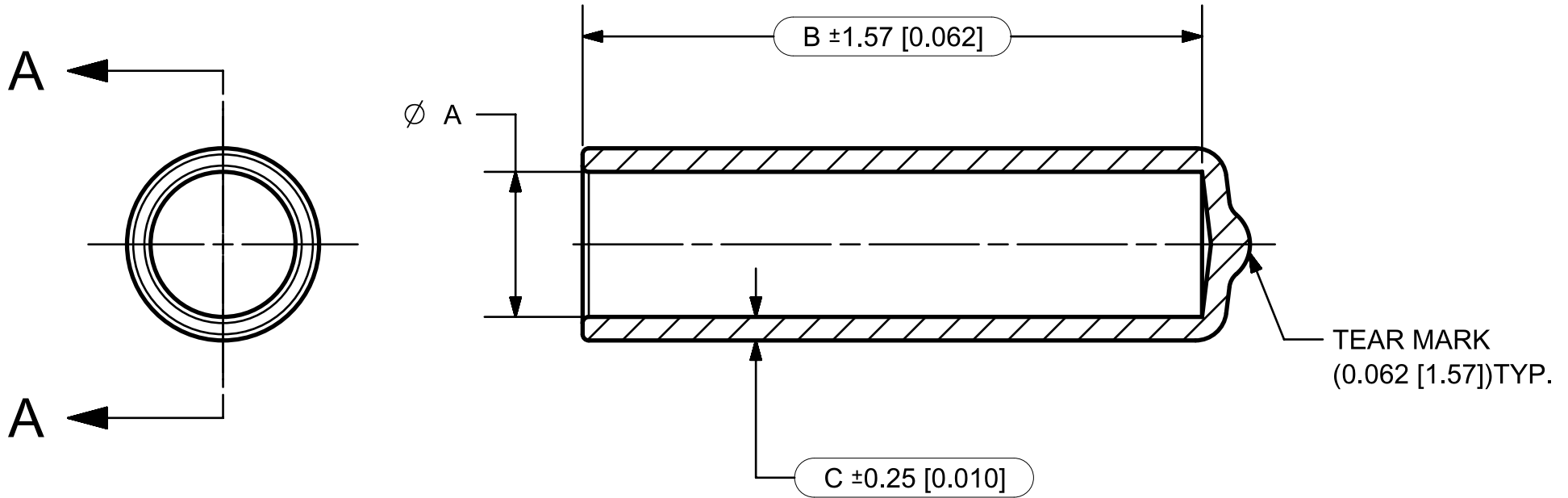




REV	DESCRIPTION	DATE	BY	APP

SECTION A-A



- NOTES:
1. DIMENSIONS IN [ ] ARE INCHES.
  2. DIMENSIONS INSIDE OVALS ARE INSPECTION DIMENSIONS.  
ALL OTHER DIMENSIONS ARE REFERENCE.
  3. MATERIAL: FLEXIBLE PVC

	<b>STOCKCAP VISIPAK GRIPWORKS</b> <a href="http://www.stockcap.com">www.stockcap.com</a> <a href="http://www.visipak.com">www.visipak.com</a> <a href="http://www.gripworks.com">www.gripworks.com</a>		
	SINCLAIR & RUSH, INC 123 MANUFACTURERS DR. ARNOLD, MO 63010		
THE VINYL DIP MOLDING PROCESS RESULTS IN VARYING WALL THICKNESS. WALL THICKNESS IS MEASURED AT SPECIFIED POINT ONLY.  TOLERANCES: (UNLESS OTHERWISE SPECIFIED)  DECIMALS .XXX ±0.25 [±0.010]	THIS DRAWING CONTAINS CONFIDENTIAL INFORMATION OF SINCLAIR & RUSH INC. AND IS NOT TO BE COPIED, USED OR, DISCLOSED TO OTHERS WITHOUT THE EXPRESS WRITTEN CONSENT OF SINCLAIR & RUSH, INC		DRW      DATE
	ALL DIMENSIONS AND SYMBOLS CONFORM TO ANSI Y14.5  		CK      DATE  APP      DATE
DESCRIPTION <b>S-CAP</b>			<b>SCALE: N/A</b>
SIZE <b>A</b>	SHEET <b>1 OF 1</b>	PART / DRAWING NUMBER <b>S-CAP</b>	REV <b>0</b>